

A decorative frame consisting of two L-shaped bars, one in the top-left and one in the bottom-right, both in a dark gray color. The bars are thick and meet at the corners.

The Role Of Research Centers In Decision Making

Dr. Rajaa Al-Raddadi
MD, ABCM, RICR, MMedEd

Outline

- Research Centers
- Decision Maker
- Evidence based decision making
- Research Embedded Decision making
- Research in Saudi Arabia

Research Centers

- Research centers and scientific organizations are producing research, studies and analyzes of the issues of domestic and international problems, and have an active role in enabling decision makers to make informed decisions on certain issues.
- Research centers and scientific organizations are independent institutions are autonomous and permanent neutrality, objectivity and adheres to international norms, standards and understanding of the general environment and the national interest unlike some special committees.

Think Tank

- Centers and scientific research institutes are working on solving complex problems or to predict future developments and planning, as is the case in the political and military establishments, or social fields.

Dec

- Decision making is based on the information available.
- Making a decision involves considering, and evaluating, these alternatives against the goals, objectives, and values.

Decision-making needs to be (quality of information, accurate information, the information is complete, and the ability to compile the information) in order to produce meaningful to display signs of being built upon evaluation of scientific objectivity of the study.

(Harris (1980))

Evidence Based Decision-making

- Evidence-based decision-making is the process of making decisions about the program and practice, or policy which is based on the best available research evidence and informed by empirical evidence from the field and evidence relevant to the merits of the case.

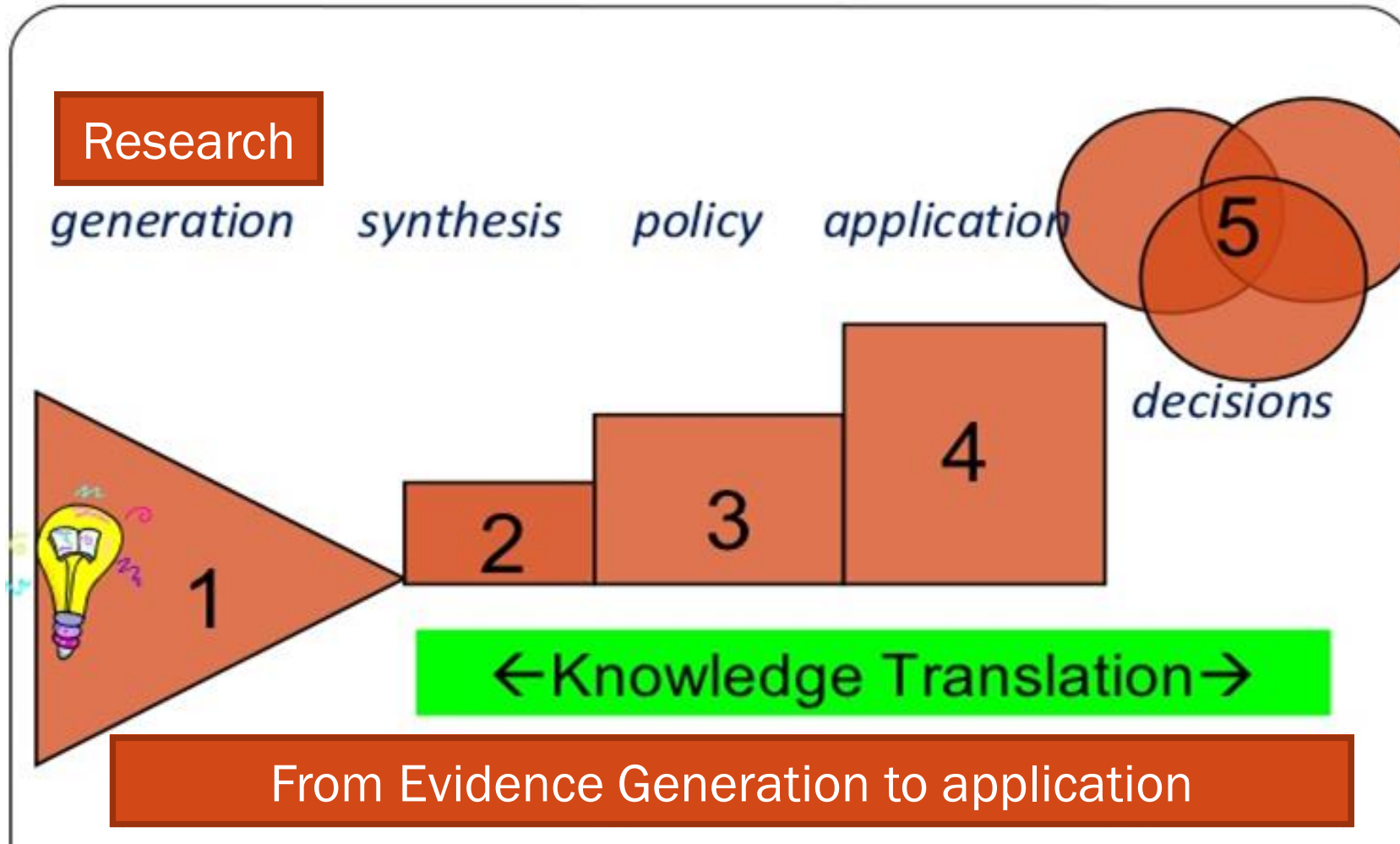
Evidence vs Research

- Evidence is distinguished from research in that a single research study does not constitute evidence but, rather, contributes to an overall body of knowledge derived from multiple studies investigating the same area.
- Evidence is the synthesis of all valid research studies that answer a specific question.
- Once synthesized, this evidence can help determine whether a method is effective as compared to other methods under what circumstances.

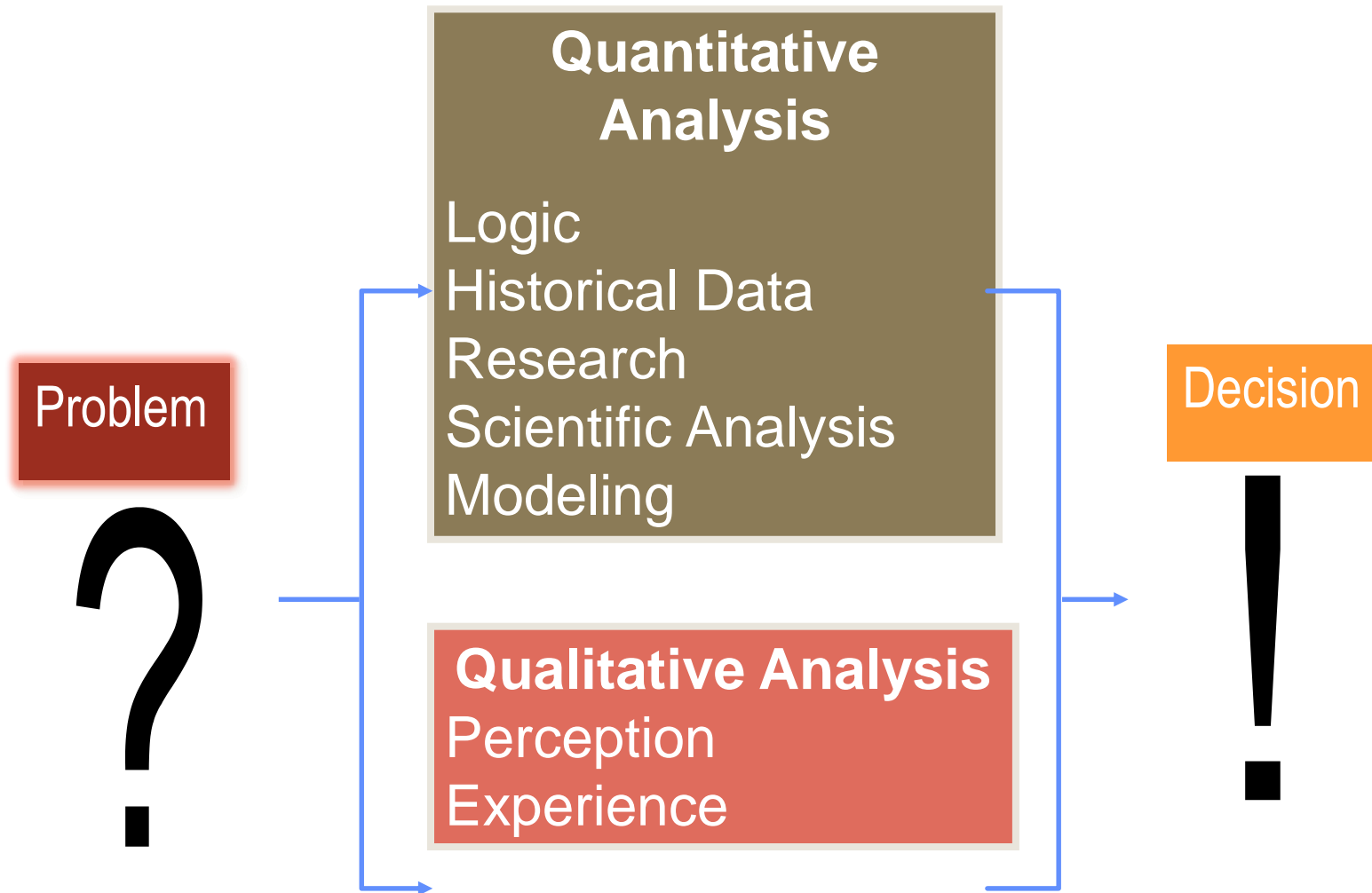
Source of Evidence

- Experience and knowledge of specialists
- Studies and research and previous releases
- Studies and Research and current releases
- Visuals stakeholders
- Previous policy and assess the lessons learned
- Results of consultations
- Cost calculations of policy options
- The output of the economic and statistical models

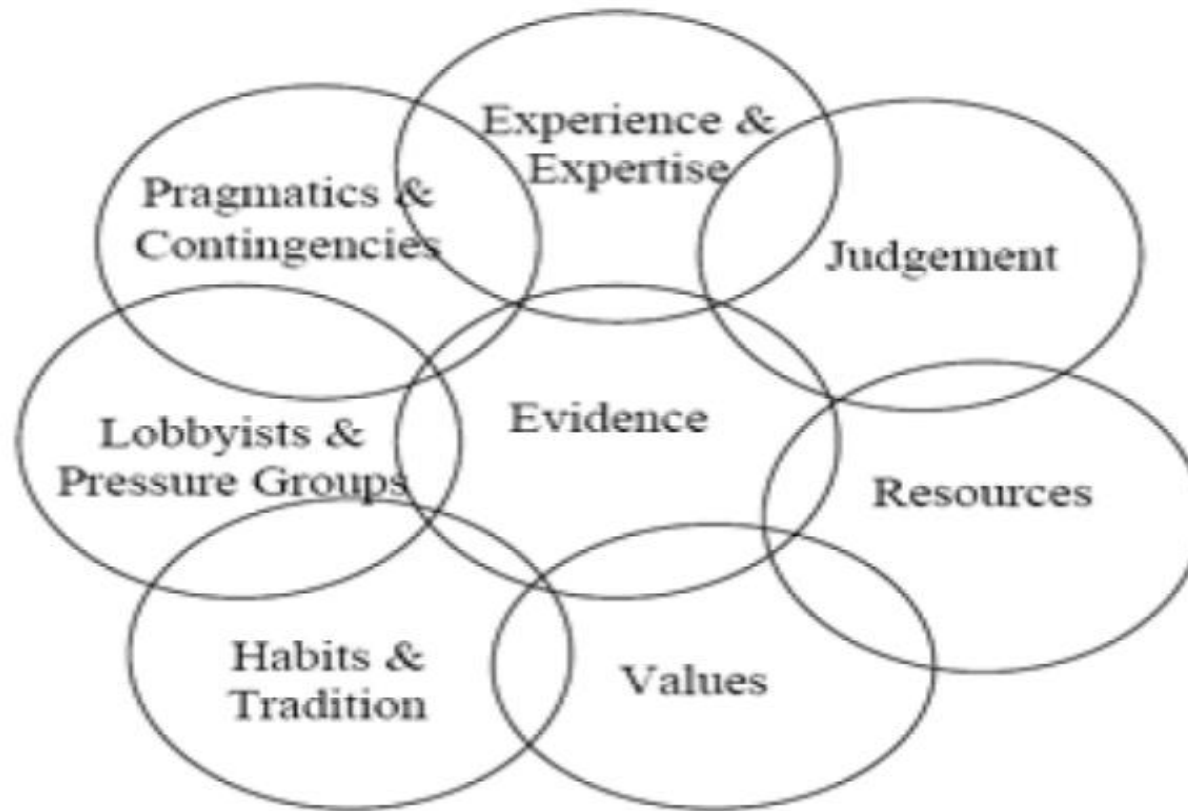
Knowledge Translation



The Decision-Making Process



Factors influencing policymaking in Government



Source: Davies (2004)

Health Research strategy

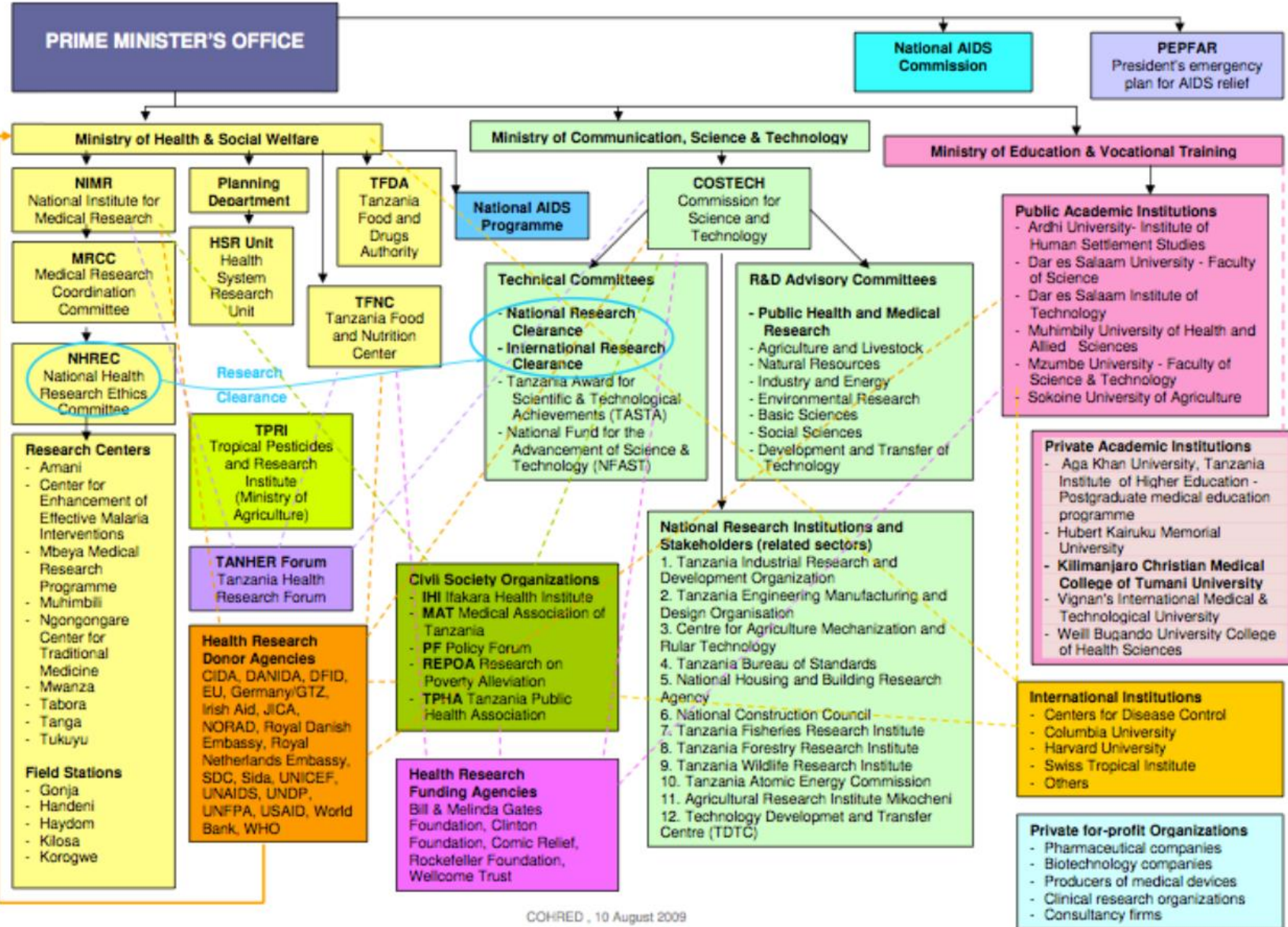
1. Priorities
2. Standards
3. Capacity
4. translation
5. collaboration
6. Funding

Interaction between research Center and decision-makers

- Institutionalizing the use of evidence for policy making
- Linkages between research institutions and decision making: how evidence is sourced

Institutionalizing the use of evidence for policy making

Health Research Architecture in Tanzania



Source:COHRED. *Tanzania: An Assessment of the Health Research System*: Council on Health Research for Development; 2009

2- Linkages between research institutions and decision making: how evidence is sourced

- Sourcing of evidence is situational.
 - *related to “burning policy questions,”*
 - *originating from routine data collection. However, a key aspect of sourcing research was that it should be **relevant to decision makers’ needs**. For research to satisfy to this relevancy, it is important to create opportunities for the development of personal relationships between researchers, research institutions and decision makers to improve information flow.*
- Evidence published in **journals** although it was acknowledged that time constraints on the part of decision makers make this a rarer source of information

Factors Hypothesized to Influence the degree of Embeddeness of Research Institutions in Policy Making

1. quality of connections
2. quantity of connections
3. Capacity
4. Reputation
5. creating a culture for research among decision makers
6. translation

there is a clear need for more research to better understand these issues
for furthering knowledge

Research in Saudi Arabia

- Saudi Arabia has increasing its funds for the research and development.
- In the past years, it was only 0.1 % of the gross domestic product
- now it increases into 0.7 % .
- According to the National Science and Technology Plan, it will reach about 1.6 % in 2020
- About 2 % in 2025.
- The care for the research in the universities were increasing in number.

Research Centers in Saudi Arabia

- Universities
 - *Research centers*
 - *Chairs*
 - *Centers of Excellence*
- King Faisal specialist Hospital and Research Center
- Saudi Health Council
- Other research center

Research Fund in SA

- King Abdulaziz Medical City for science and Technology
- Universities
- Private Sectors
- Others

Saudi Health Council

Among the 17 objectives of Saudi health council

- Conducting studies and general health research which help the Saudi Health Council in setting health plans, policies and strategies.
- Following the procedures of the health research according to the financial rules and regulations of the health research announced by Saudi Health Council in cooperation with King Abdulaziz City for Science and Technology.
- identifying health problems and setting up a national health profile in the light of the research results and national data records.
- Getting a data base of health research in cooperation with the National Health Information Center and King Abdulaziz City for Science and Technology.
- Coordinating and cooperating with the specialized agencies in implementing the quality standards of the research agencies and the quality of the health research and evaluating it.

Recommendation

- The key aspect of sourcing research is that it should be **relevant to Decision Makers' Needs**
- Make the Research embedded in the health system to ensure the quality and impact
- It is important to create opportunities for the development of relationships between researchers, research institutions and decision makers

Policy makers and research in SA

	No.	%
<i>Previous research done in the institution</i>		
Yes	26	12.4
No	184	87.6
<i>Received recommendations from research</i>		
Yes	40	19.0
No	170	81.0
<i>Finding solutions for problems from research</i>		
Yes	49	23.3
No	161	76.7
<i>Sharing in previous research</i>		
Yes	109	51.9
No	101	48.1
<i>Conducted research</i>		
Yes	109	51.9
No	101	48.1
<i>Think that conduction of research is important</i>		
Yes	201	95.7
No	9	4.3
<i>Wish to conduct research</i>		
Yes	176	83.8
No	34	16.2



Because what

Yes, me is
now did help?
you but
know? tely
useless

Problem

Because you
don't know where
you are, you don't
know where
you're going, and
now you're
blaming me



Bridge the Gap between Research centres and the Decision



التوصيات

- تحليل واقع مراكز الأبحاث في المملكة.
- رسم إستراتيجية واضحة لتفعيل العلاقة بين مراكز الأبحاث وجهات صنع القرار.
- اتخاذ خطوات عملية لتبادل المنفعة بين جهات صنع القرار ومراكز الأبحاث .

Thank You